

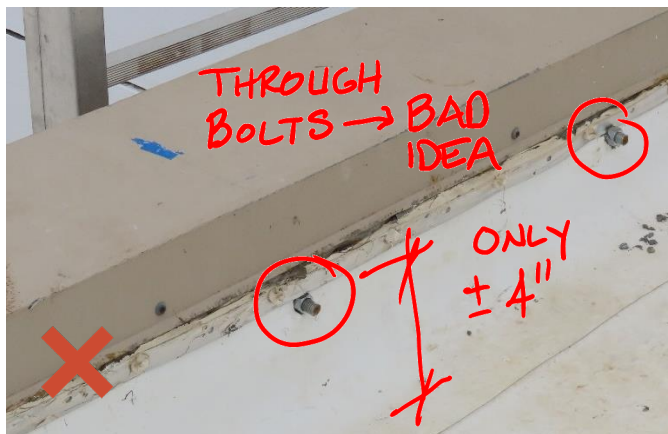
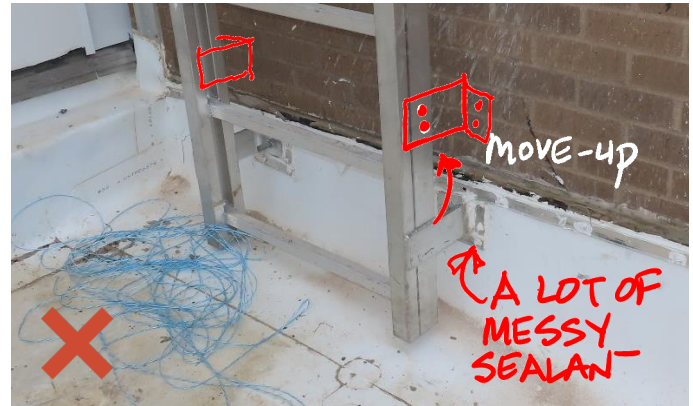


Shop Drawings for steel or aluminum ladders being installed on the building's exterior need to be explicitly reviewed for attachment to the building and make sure that it is not in a compromising location.

Attaching the ladder through the roofing near the base of the roof is essentially making a long-term warranty installation (roofing) into a maintenance issue at a vulnerable location that will rely on the sealant adhesion and UV resistance.

At these low conditions, water, snow, and ice could accumulate where we are relying on the sealant to make the roof watertight.

This installation will likely leak in a short time frame with it being so low on the parapet.



It is recommended to connect to the substrate above the roofing or as high as possible to avoid water, snow, and ice build-up near the attachment location.

Always review shop drawings for attachment location and discuss a change when needed with the Architect.

We also need to look at the elevator ladders. Attaching the ladder to the bottom is not recommended due to water concerns... Wall only is recommended.